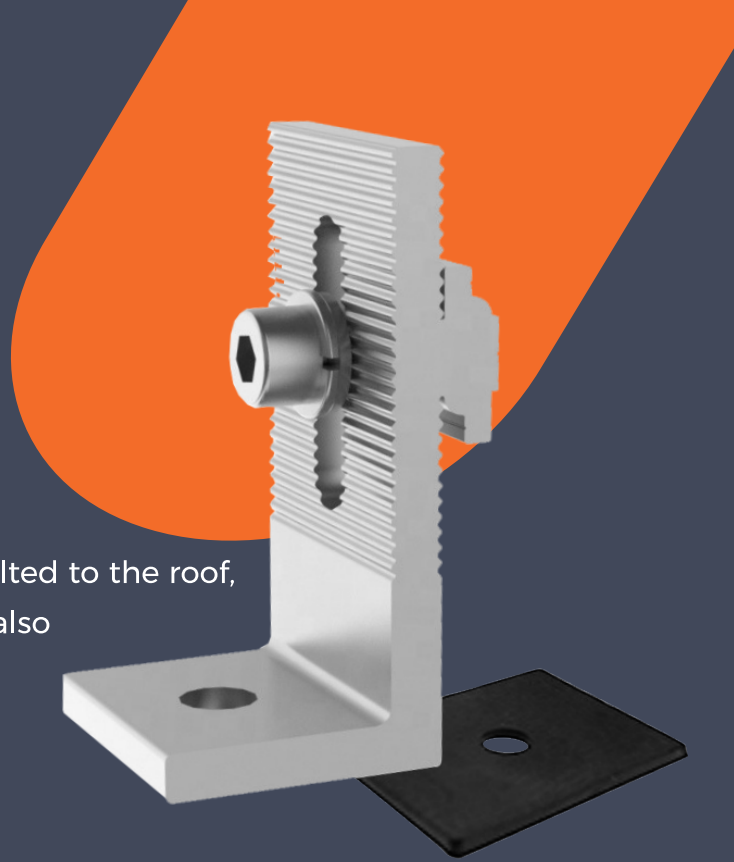


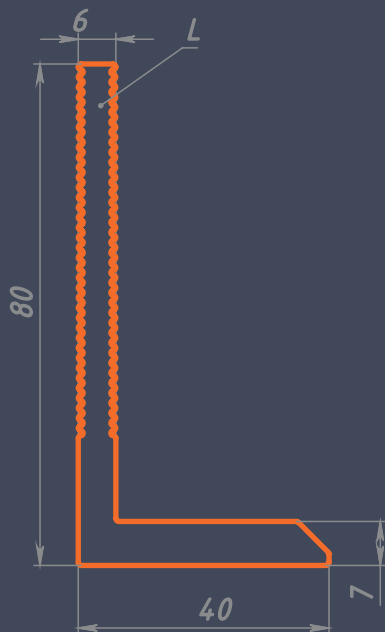
## L - SHAPED BASE LSB-01

Fixed to the roof of the building, fixing feet for R 01, Easy to install, requires few resources, bolted to the roof, simple, with little investment in labor costs. It is also used on folding, tin and other roofs.



## Product features

Name	L-shaped base
Material	High grade aluminum alloy, corrosion resistant Al 6005-T5
Processing method	Extruded, Anodized,
Surface flatness	0,1
Color	Natural silver
Weight	70,8 (g)
Tensile strength, yield (stretch 5 mm/min)	10,88 (kN)



- There are no oil stains, cracks, corrosion spots, delaminations, air bubbles on the surface of profiles.
- The cross section of the product does not have bends, twists, deformations or protrusions according to the requirements of the drawing